

# Activity 4

## Next generation IBNet

# Project progress....

2013

- Start in september
- Establishing project management
- Background studies

2014

- Specification and procurement of development
- Contract signed in the end of December

2015

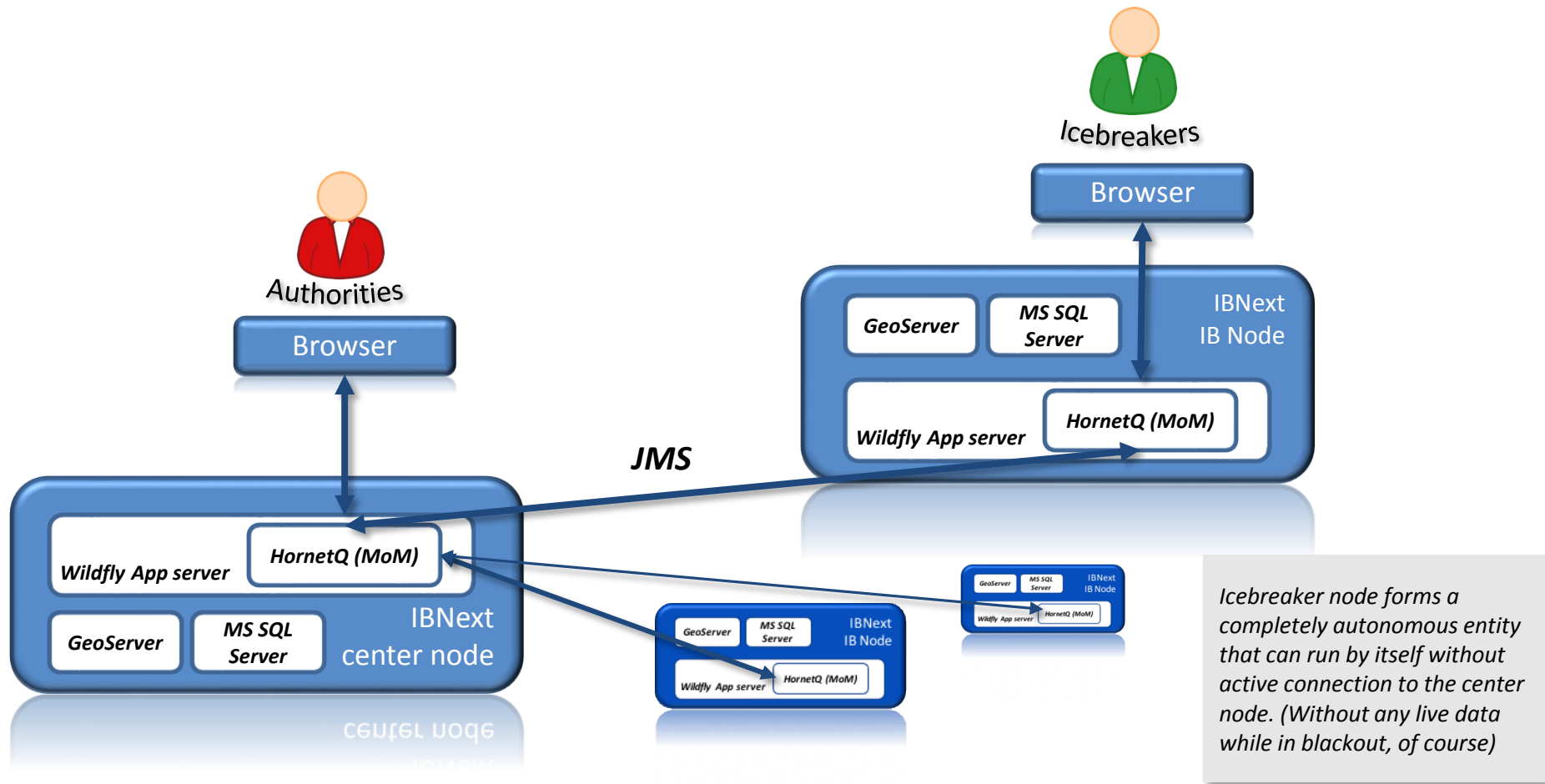
- Development and implementation of prototype
- Installed on 4 icebreakers in beginning of December
- Positive feed-back from users

.....

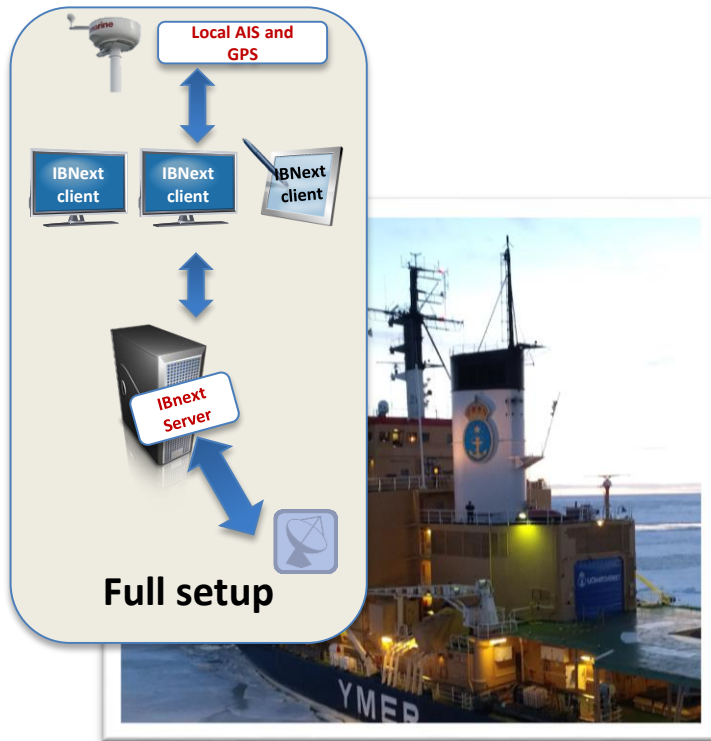
2016

IBNext II is started and is an activity in the WINMOS II application

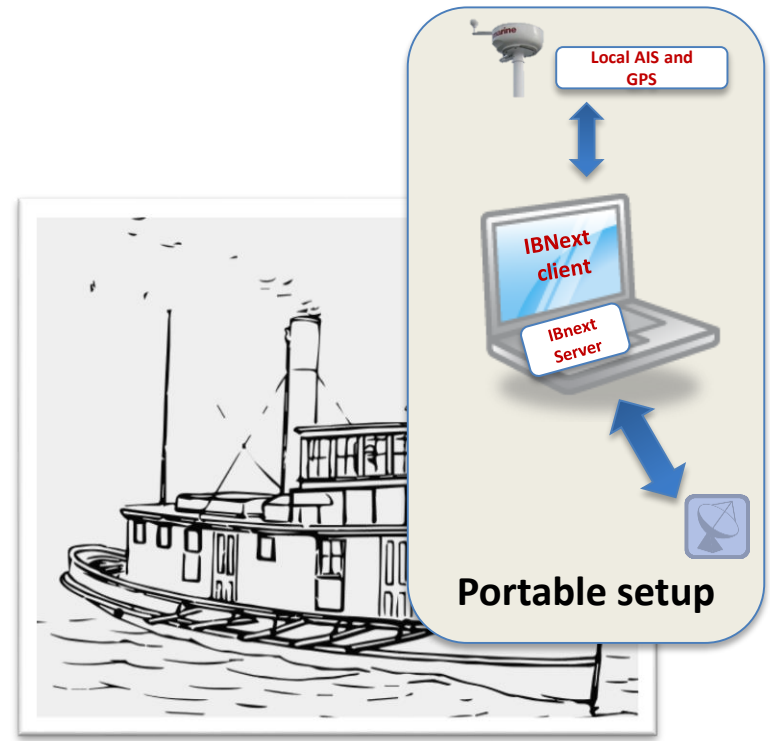
# High level systems architecture



# Fixed and portable icebreaker setups



*The primary ice breakers will get a fixed installation of IBNext into their IT infrastructure. IBNext will be available as a web based service in the local IB network to everyone who is allowed to use it.*



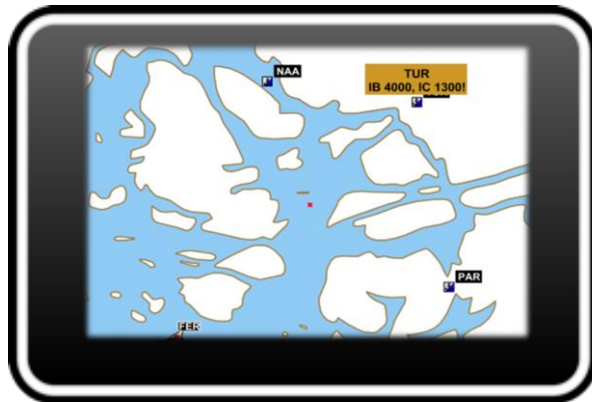
*The temporary ice breakers can be equipped with a portable version of IBNext. This version is packed into one single laptop.*

# **IBNEXT - ARCHITECTURE FROM END- USER PERSPECTIVE**

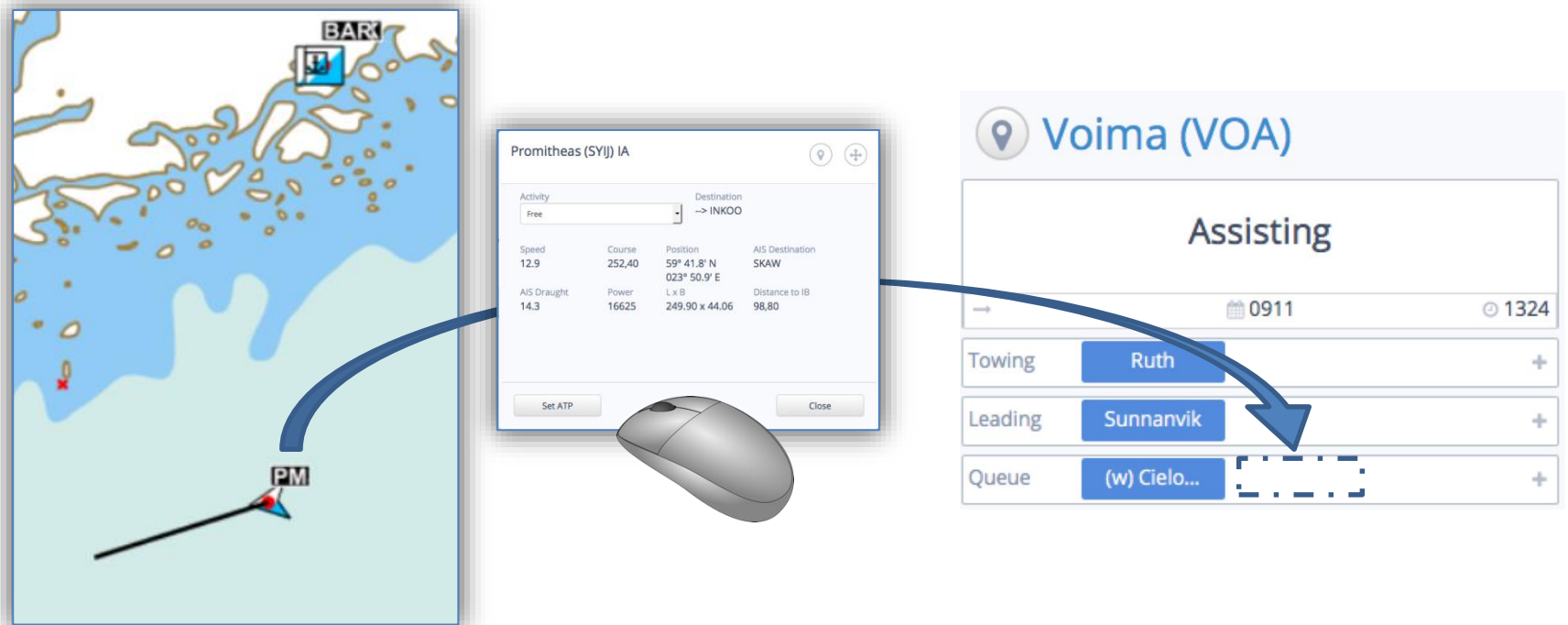
# Browser based solution

The solution is fully browser based. It can be utilized with any device that has a modern web browser. Both on shore and on board the ice breakers.

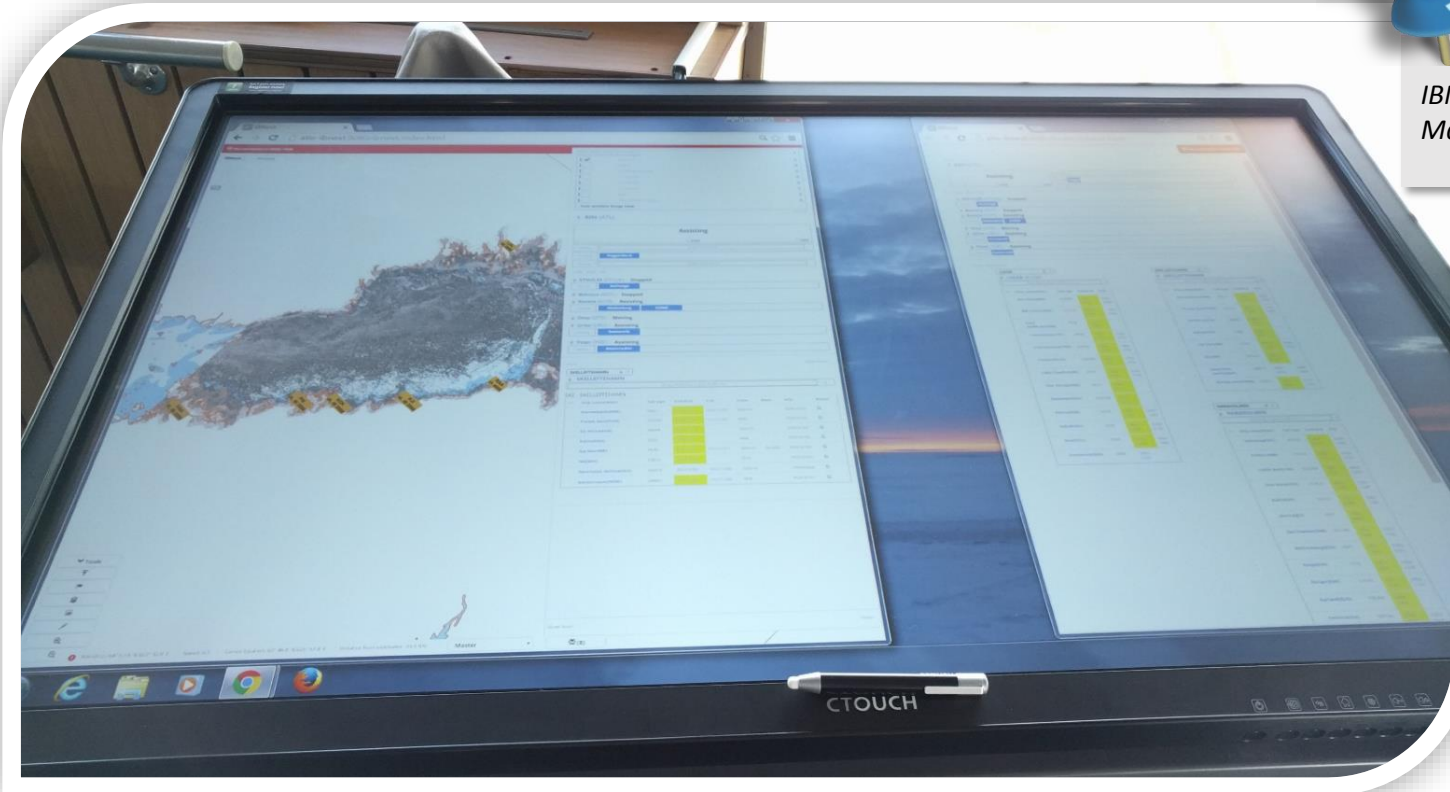
*However, physical characteristics of devices, may imply practical level restrictions to the set of feasibly usable scenarios.*



# Modern UI technologies like drag & drop



# Touch screen support



*IBNext onboard ATLE on  
March/2016*

*IBNext already has initial level support for touch screens*